

# Howardian Hills National Landscape

Ellie Hook  
Manager  
14 June 2024



**Howardian  
Hills**  
National  
Landscape



# To cover

- Introduction to National Landscapes
- Howardian Hills area and team
- Plans to extend JAC membership
- Questions/discussion



Howardian  
Hills  
National  
Landscape



# Protected Landscapes

## 15 UK National Parks, 2 in North Yorkshire:

- North York Moors
- Yorkshire Dales

## 46 UK National Landscapes, 4 (5) in North Yorkshire:

- Howardian Hills
- Nidderdale
- Forest of Bowland
- North Pennines
- (Yorkshire Wolds)

## Legislation:

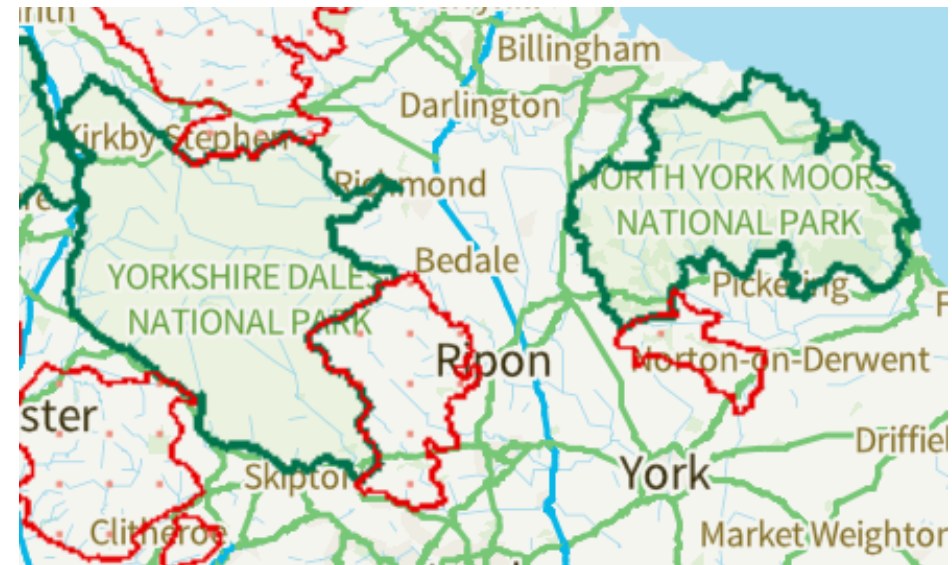
- National Parks and Access to the Countryside Act 1949
- Countryside and Rights of Way Act 2000

## Primary purpose of a National Landscape:

- To conserve and enhance natural beauty



Howardian  
Hills  
National  
Landscape



# Latest developments

## Re-brand:

- From 'Area of Outstanding Natural Beauty' to 'National Landscape'
- New suite of branding



## Unitary:

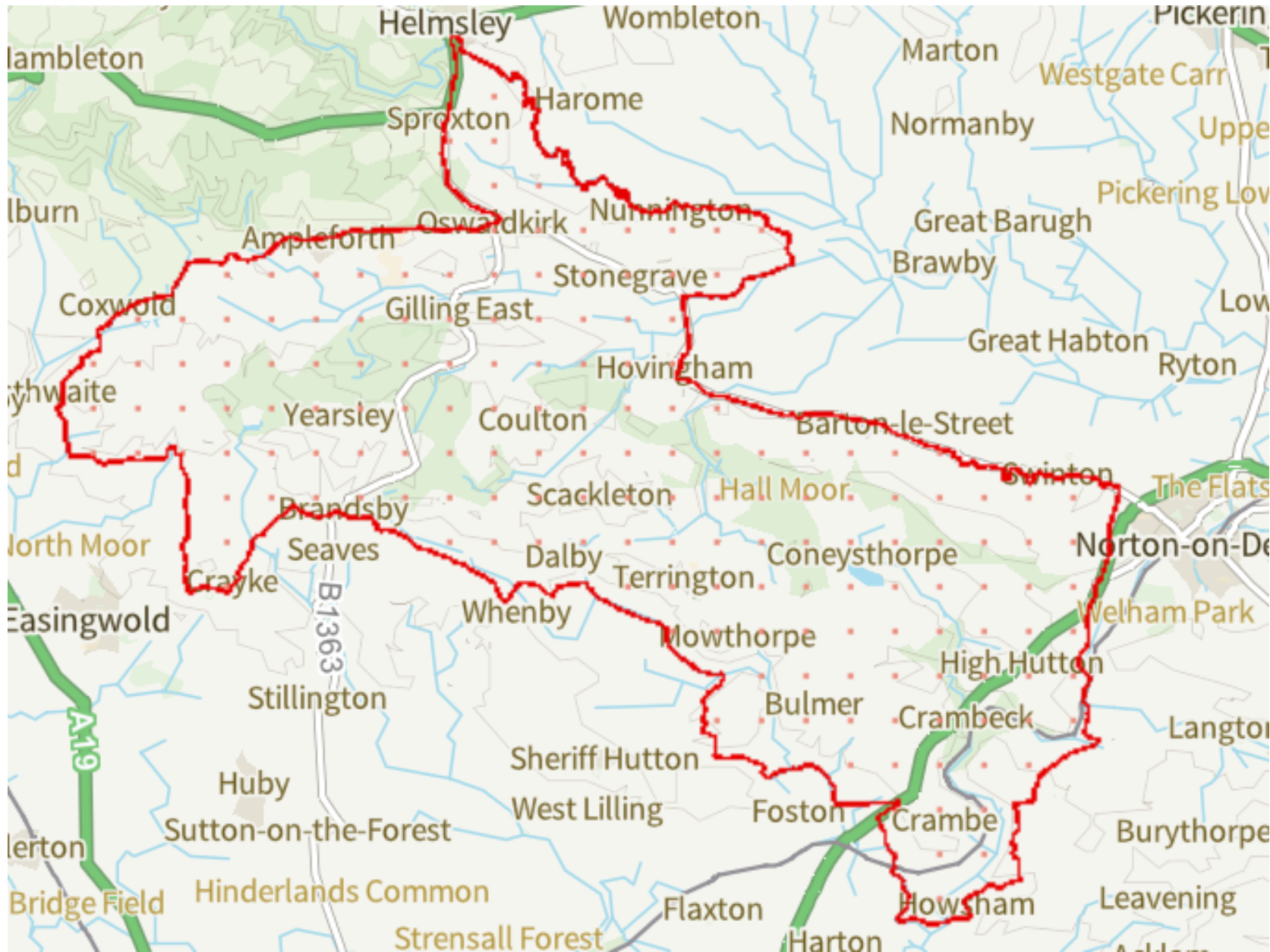
- Brought Nidderdale and Howardian Hills under the new unitary authority
- Both under Environment and Sustainability (Shaun Berry) in Environment (Michael Leah)

## Levelling Up and Regeneration Act 2023:

- Previous duty - Relevant authorities to 'have regard' to the purpose of an AONB (National Landscape), Section 85, Countryside and Rights of Way Act 2000
- New duty - 'To seek to further the purpose(s) of designation of the protected landscape', Section 245, Levelling Up and Regeneration Act 2023 ('the LURA'), became law 26 October 2023, came into effect 26 December 2023
- Strengthened role of management plans as a key reference point for helping to identify how relevant authorities should deliver the new duty



# Howardian Hills



Howardian Hills  
National Landscape





# Howardian Hills

**Size:** 204 sq km

**Budget:** Approx. £700k (plus HBGF £2 million?)



## **Joint Advisory Committee:**

North Yorkshire Council (employing authority) – currently 2 elected members, 2 officers

Community/parish representatives

Natural England, Forestry Commission

NFU, CLA

Ramblers

## **Staff Team:**

Core (2.6 FTE)

Manager (Ellie Hook 1.0 FTE)

Project Officers (Chess Pert 0.5 FTE, Rosy Eaton 0.4 FTE, Fran Standen 0.3 FTE)

Conservation Grants Administrator (Tony Croser 0.4 FTE)

FiPL (1.6 FTE)

Farm Conservation Officer (Nick Burrows 1.0 FTE)

Conservation Grants Administrator (Tony Croser 0.6 FTE)



# Review of 2023-24 delivery

## Main activities

- New branding and positioning of National Landscapes
- New duty for relevant authorities
- Working with/in a unitary North Yorkshire Council
- Consultations, planning and woodland management plans responses
- Nature Recovery Plan
- Biodiversity net gain, Natural capital, Carbon trading
- Tourism, access and recreation planning
- Communications
- Art and education, Cause and Effect exhibition
- Volunteers
- Events - Ryedale and Malton shows, community events
- High profile visits (Secretary of State, Defra Director)
- Access for All
- Good Food Guide Award - 'Most exciting food destination'



# Future

## Strengths:

- On-the-ground connections and delivery
- Supportive JAC
- Expert staff team
- Collaborative working

## Challenges and opportunities:

- Climate change
- Wolds designation
- Equality, diversity, inclusion, health and wellbeing
- Widening the remit – tourism, art, education
- Resources and funding, inc. external funding

A partner in larger bids

Green finance, private sector



Howardian  
Hills  
National  
Landscape

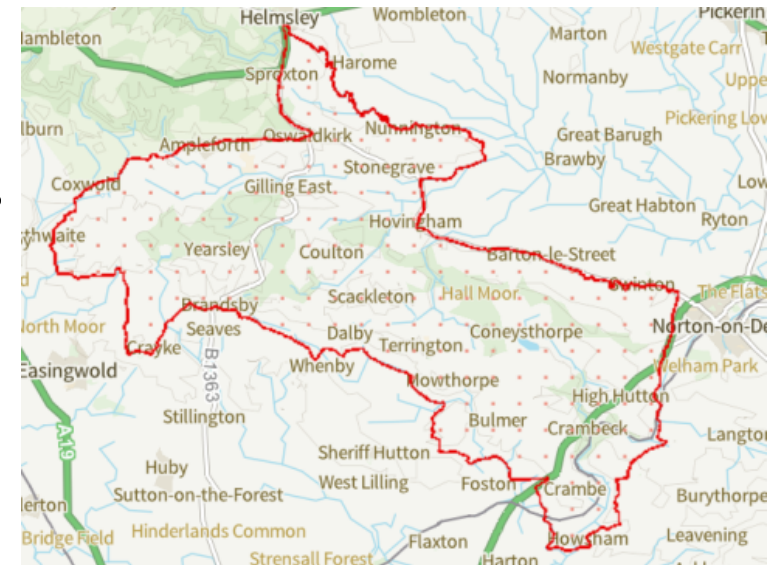




# Councillors

## Councillors with wards overlapping with the Howardian Hills

- **Alyson Baker**, Hillside and Raskelf – covers Coxwold, Newburgh, Husthwaite and Oulston
  - **Nigel Knapton**, Easingwold – covers Crayke
  - **Malcolm Taylor**, Huby and Tollerton – covers Brandsby, Yearsley, Stearsby, Skewsby and Whenby
  - **Caroline Goodrick**, Sheriff Hutton and Derwent – covers Bulmer, Coneysthorpe, Welburn, Huttons Ambo, Whitwell, Kirkham, Westow, Crambe, and Howsham
  - **Steve Mason**, Amotherby and Ampleforth – from Wass to Broughton, Coulton, Sackleton and Terrington
  - **George Jabbour**, Helmsley and Sinnington – Sproxton, Oswaldkirk, Nunnington, West and East Ness, and Stonegrave
- 
- Joint Advisory Committee would like to have 1-2 more councillors



# Questions and discussion



Howardian  
Hills  
National  
Landscape

